



VOGUE



KID FRIENDLY



SMOOTH



SOFT ON SKIN



BREATHABLE FABRIC



DECORATIVE TEXTILE

VOGUE



Sr.No. : 101

VOGUE



Sr.No. : 102

VOGUE



Sr.No. : 103

VOGUE



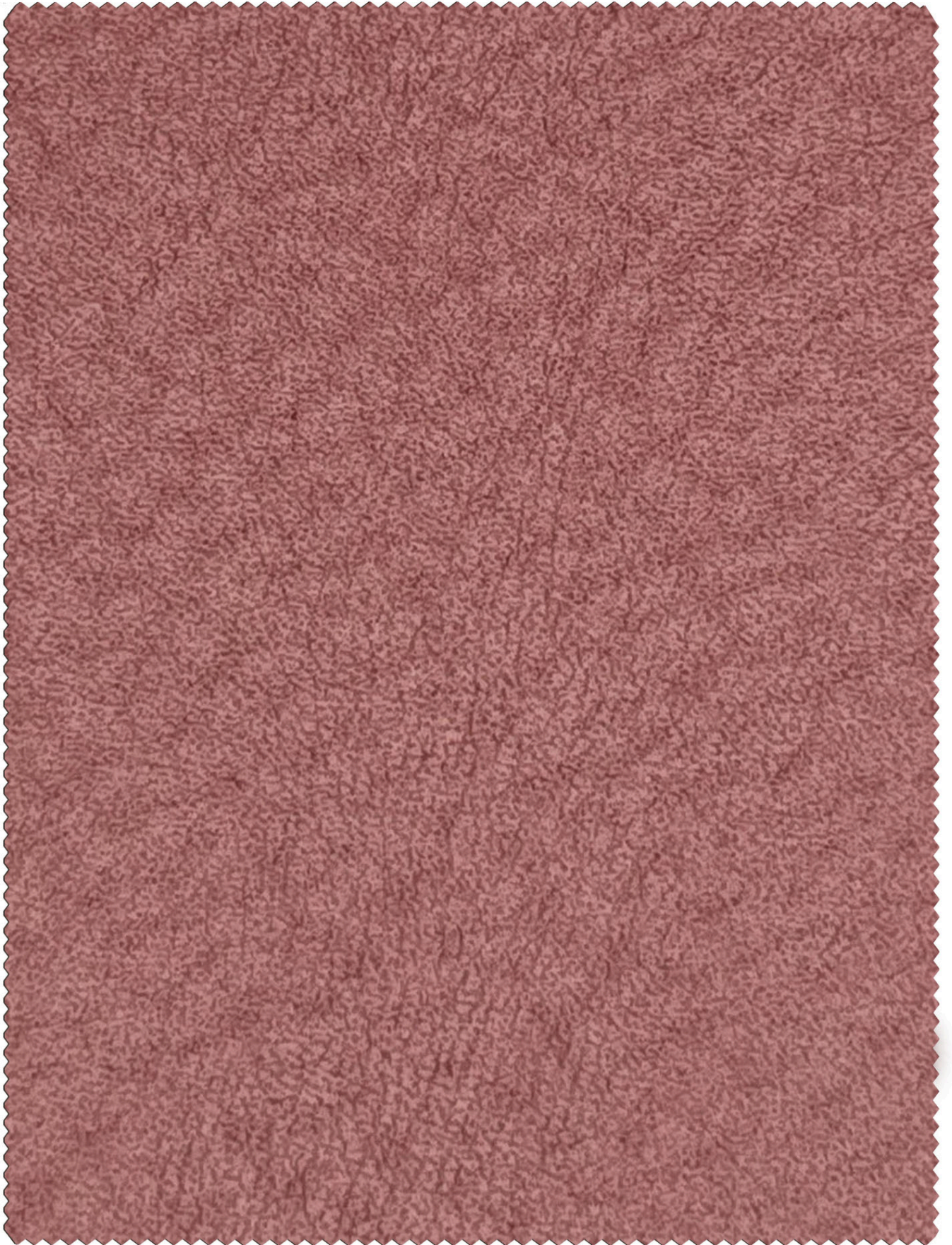
Sr.No. : 105

VOGUE



Sr.No. : 106

VOGUE



Sr.No. : 107

VOGUE



Sr.No. : 108

VOGUE



Sr.No. : 109

VOGUE



Sr.No. : 110

VOGUE



Sr.No. : 111

VOGUE



Sr.No. : 112

VOGUE



Sr.No. : 113



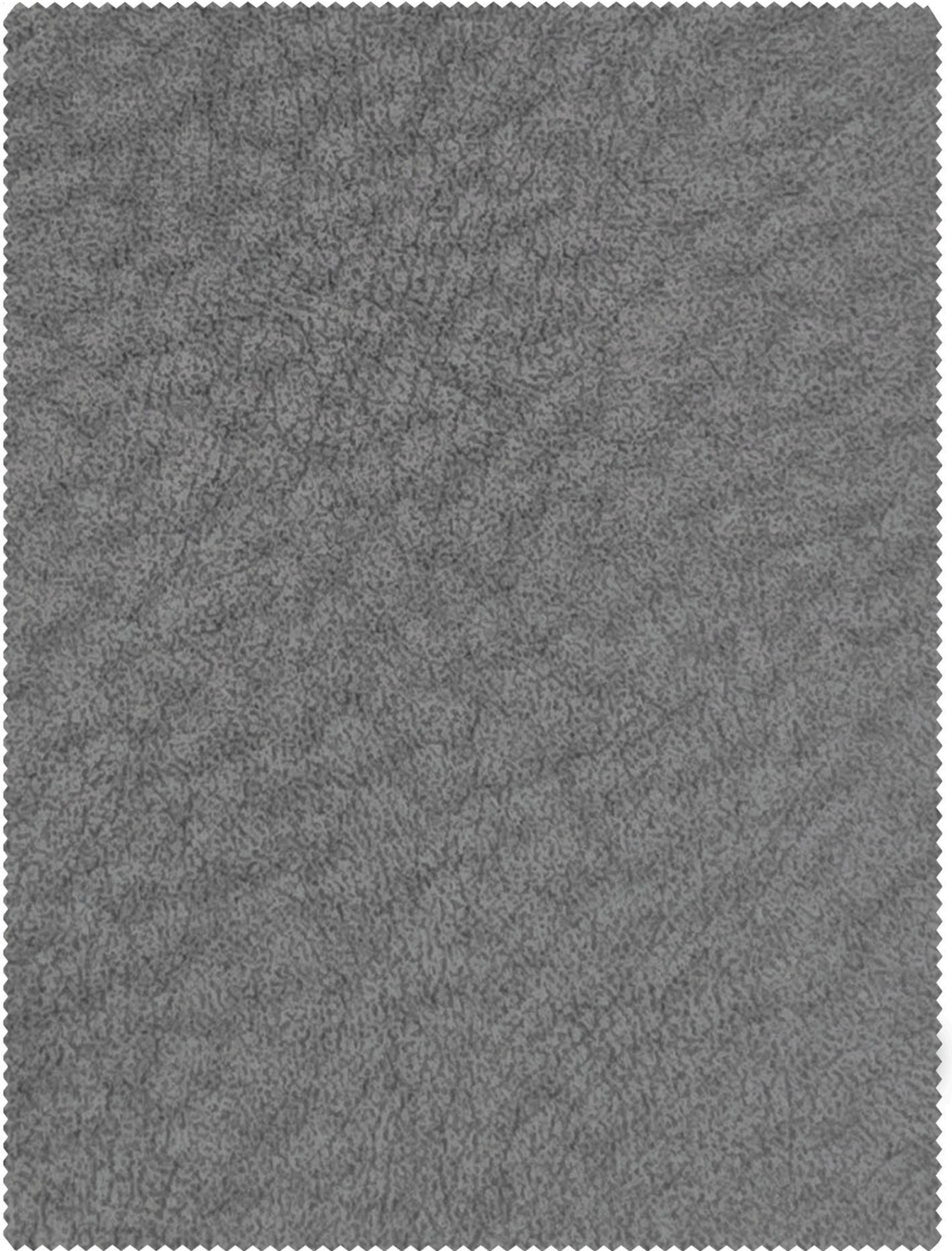
VOGUE

VOGUE



Sr.No. : 114

VOGUE



Sr.No. : 115

VOGUE



Sr.No. : 116

VOGUE



Sr.No. : 117

VOGUE



Sr.No. : 118

VOGUE



Sr.No. : 201

VOGUE



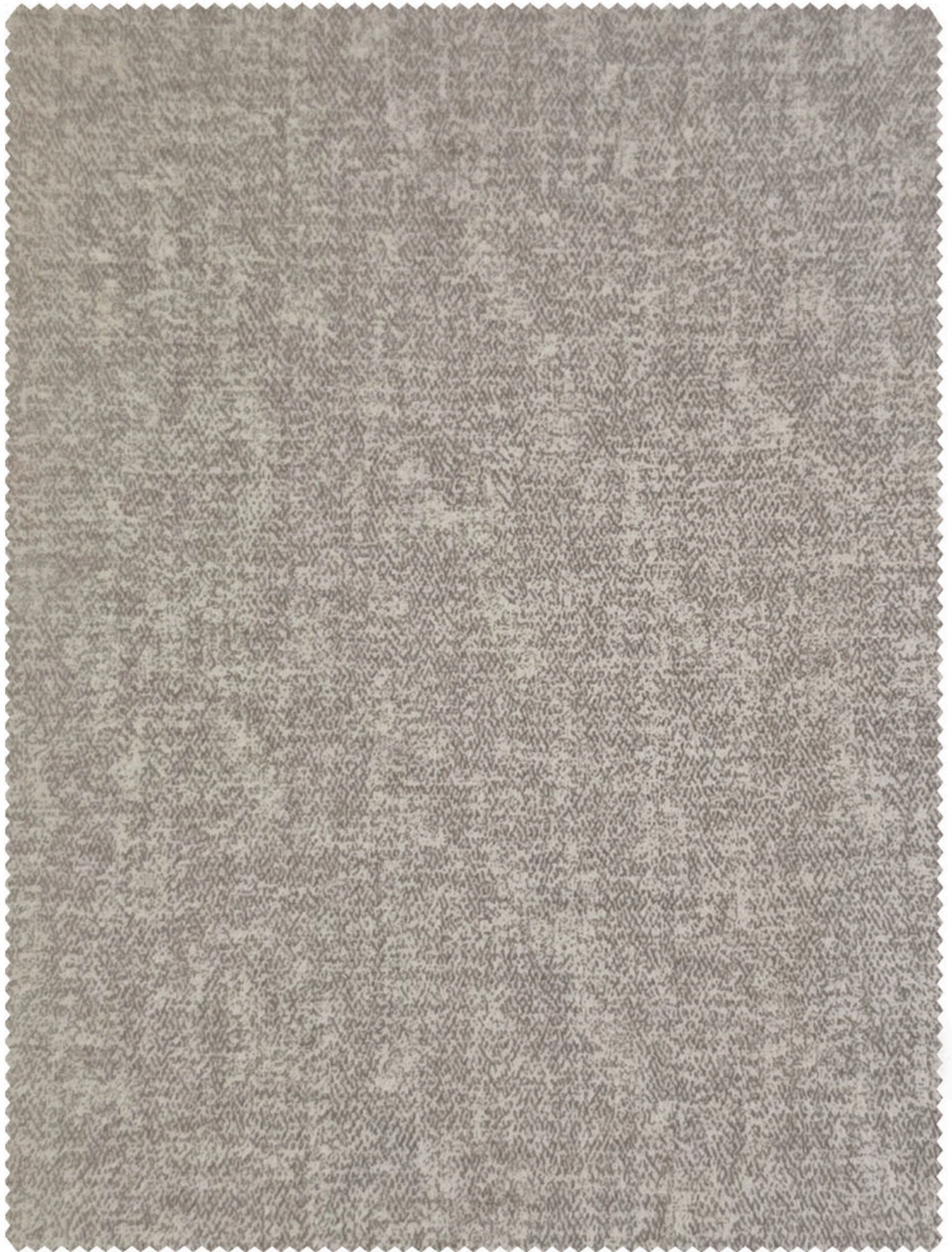
Sr.No. : 202

VOGUE



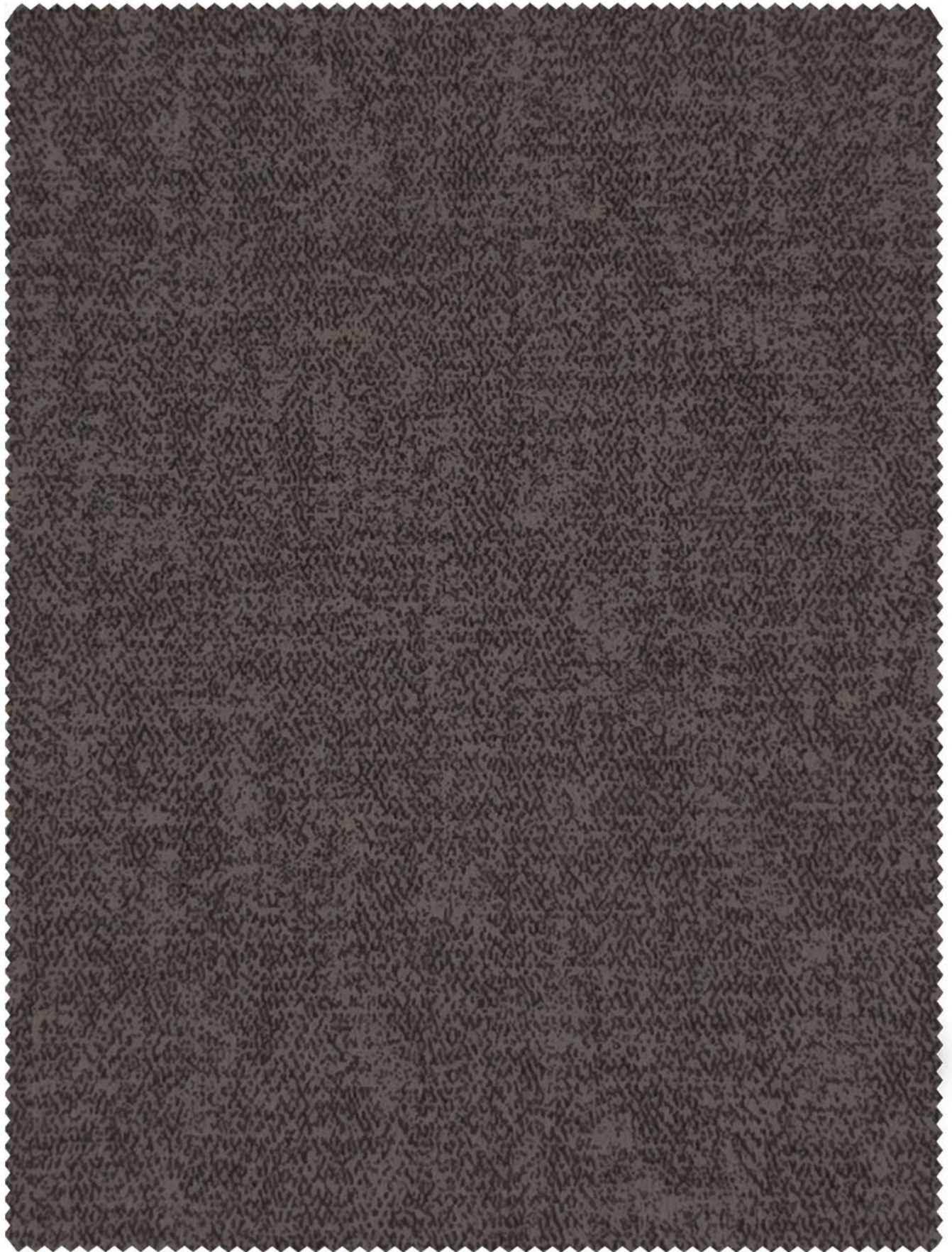
Sr.No. : 203

VOGUE



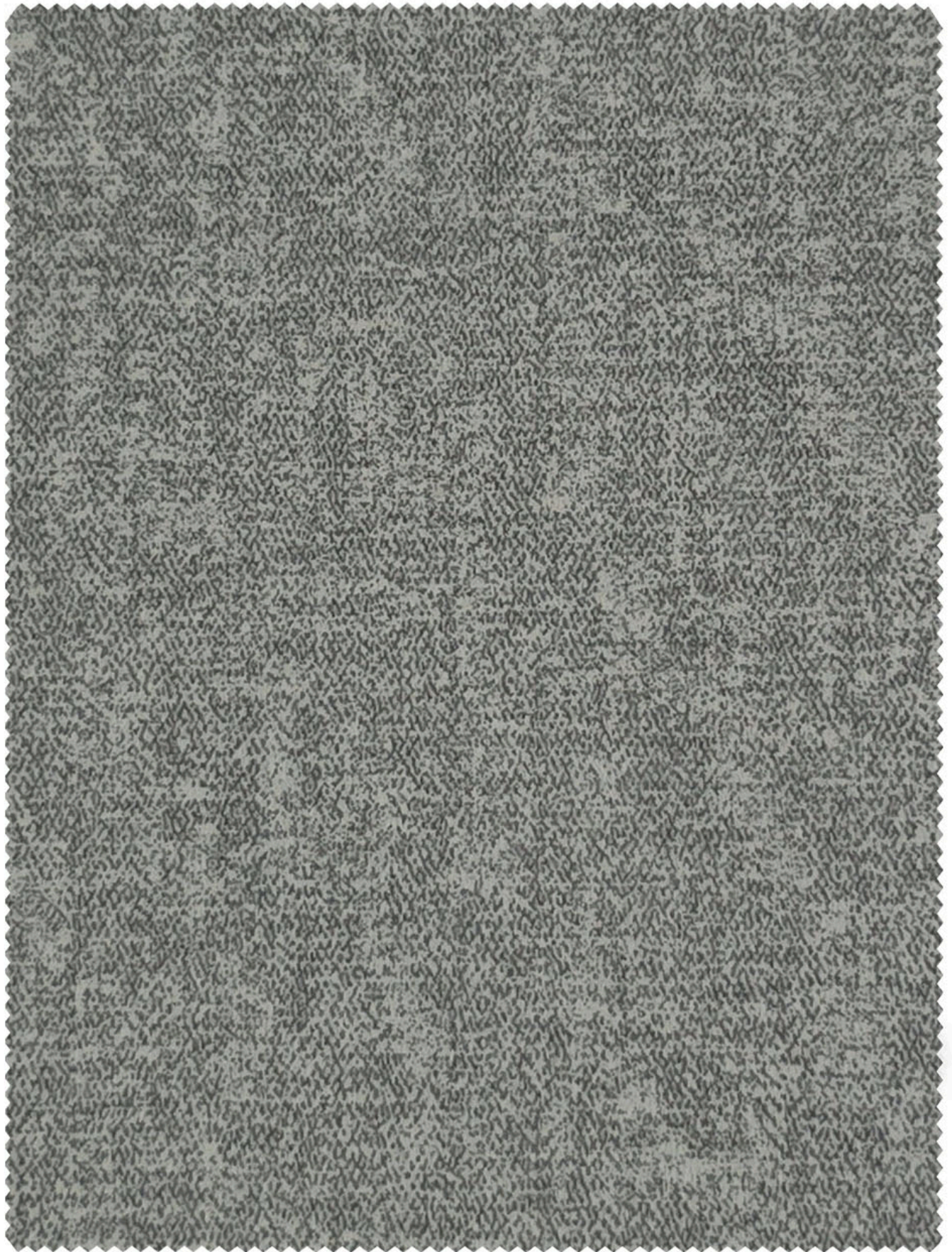
Sr.No. : 204

VOGUE



Sr.No. : 205

VOGUE



Sr.No. : 206

VOGUE



Sr.No. : 208



VOGUE

VOGUE



Sr.No. : 209

VOGUE



Sr.No. : 211

VOGUE



Sr.No. : 212

VOGUE



Sr.No. : 213

VOGUE



Sr.No. : 214

VOGUE



Sr.No. : 215

VOGUE



Sr.No. : 216

VOGUE



Sr.No. : 217

VOGUE



Sr.No. : 218

VOGUE



Sr.No. : 219


VOGUE



Sr.No. : 220



VOGUE

| Quality | Width | Composition | Martindale | End Use |
|---------|-------|----------------|-------------|---|
| VOUGE | 54" | 100% Polyester | 48,000 Rubs |  |

1. We do not accept responsibility for any damage resulting from inappropriate use, Chemical cleaning or additional impregnation.
2. Test results were gathered from various samples and therefore represent average indicative values.
3. Discolouration caused by clothing fabrics such as jeans does not represent a material defect. Minor colour deviations and discolouring in context of permissible industrial tolerance standards do not constitute reasons for claims.

Washing Instructions



Colour Shades may slightly vary from dye lot to dye lot.