



KIDS FRIENDLY



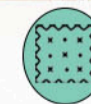
SMOOTH



SOFT ON SKIN



BREATHABLE FABRIC



DECORATIVE TEXTILE

COARSE WEAVES



## COARSE WEAVES

Sr.No. : 01



Width : 140 Cms

End use : 

Weight : 570 gms/mtr.

Composition : 95% Poly. & 5% Polymide

Martindale : 65,000 Rubs

Wash Care : 

Design : Champere

Colour : Oyester

Colour Shades may slightly vary from dye lot to dye lot.



## COARSE WEAVES

Sr.No. : 02



Width : 140 Cms

End use : 

Weight : 570 gms/mtr.

Composition : 95% Poly. & 5% Polymide

Martindale : 65,000 Rubs

Wash Care : 

Design : Pierre

Colour : Anchovies

Colour Shades may slightly vary from dye lot to dye lot.




## COARSE WEAVES

Sr.No. : 03



Width : 140 Cms

End use :  

Weight : 570 gms/mtr.

Composition : 95% Poly. & 5% Polymide

Martindale : 65,000 Rubs

Wash Care :     

Design : Lavaux

Colour : Mackerels

Colour Shades may slightly vary from dye lot to dye lot.



## COARSE WEAVES

Sr.No. : 04

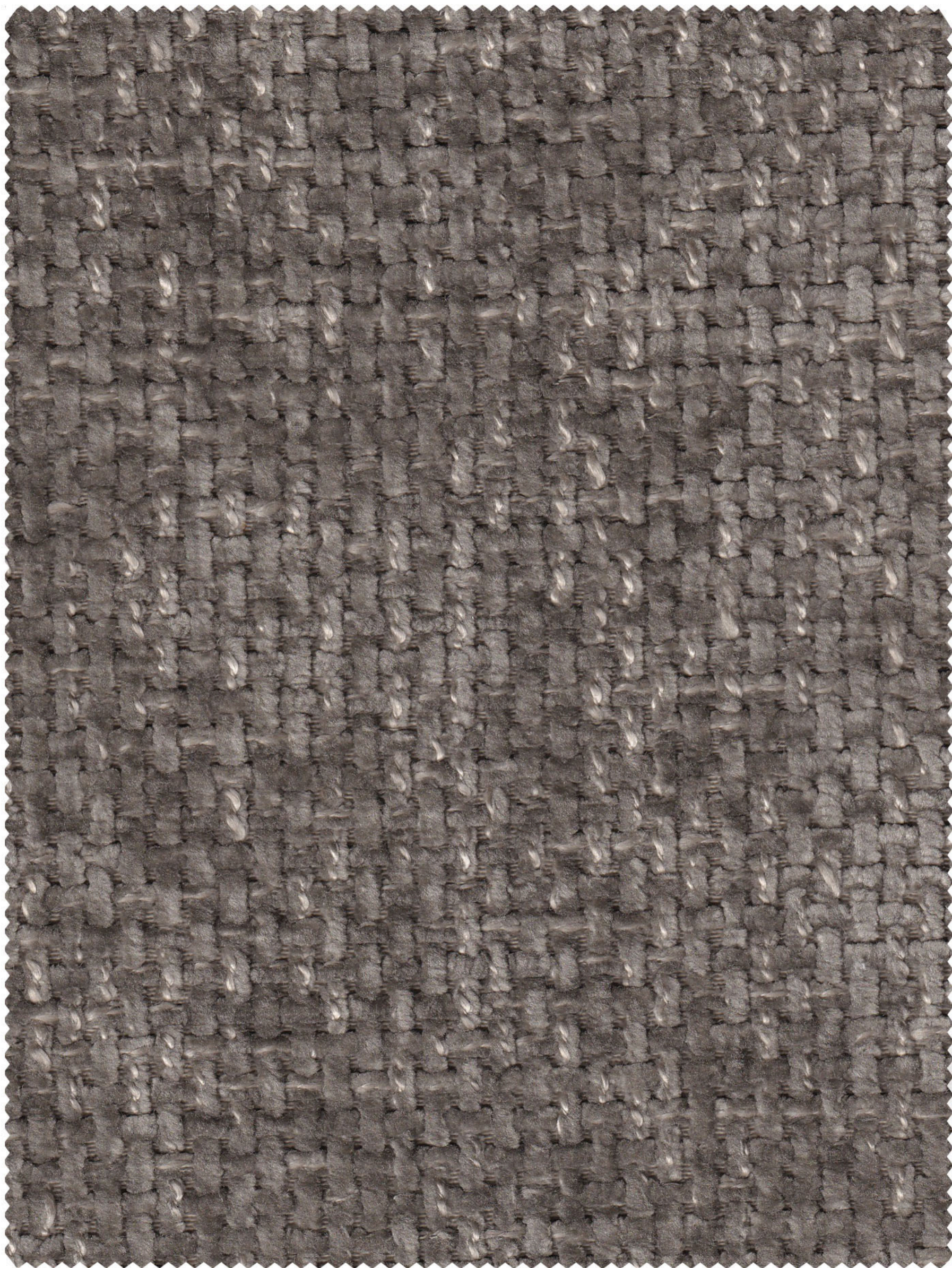


Width : 140 Cms  
End use :   
Weight : 570 gms/mtr.

Composition : 95% Poly. & 5% Polymide  
Martindale : 65,000 Rubs  
Wash Care : 

Design : Lavaux  
Colour : Pretzel

Colour Shades may slightly vary from dye lot to dye lot.



## COARSE WEAVES

Sr.No. : 05



Width : 140 Cms  
End use :   
Weight : 570 gms/mtr.

Composition : 95% Poly. & 5% Polymide  
Martindale : 65,000 Rubs  
Wash Care : 

Design : Lavaux  
Colour : Walnut

Colour Shades may slightly vary from dye lot to dye lot.



## COARSE WEAVES

Sr.No. : 06



Width : 140 Cms

End use : 

Weight : 570 gms/mtr.

Composition : 95% Poly. & 5% Polymide

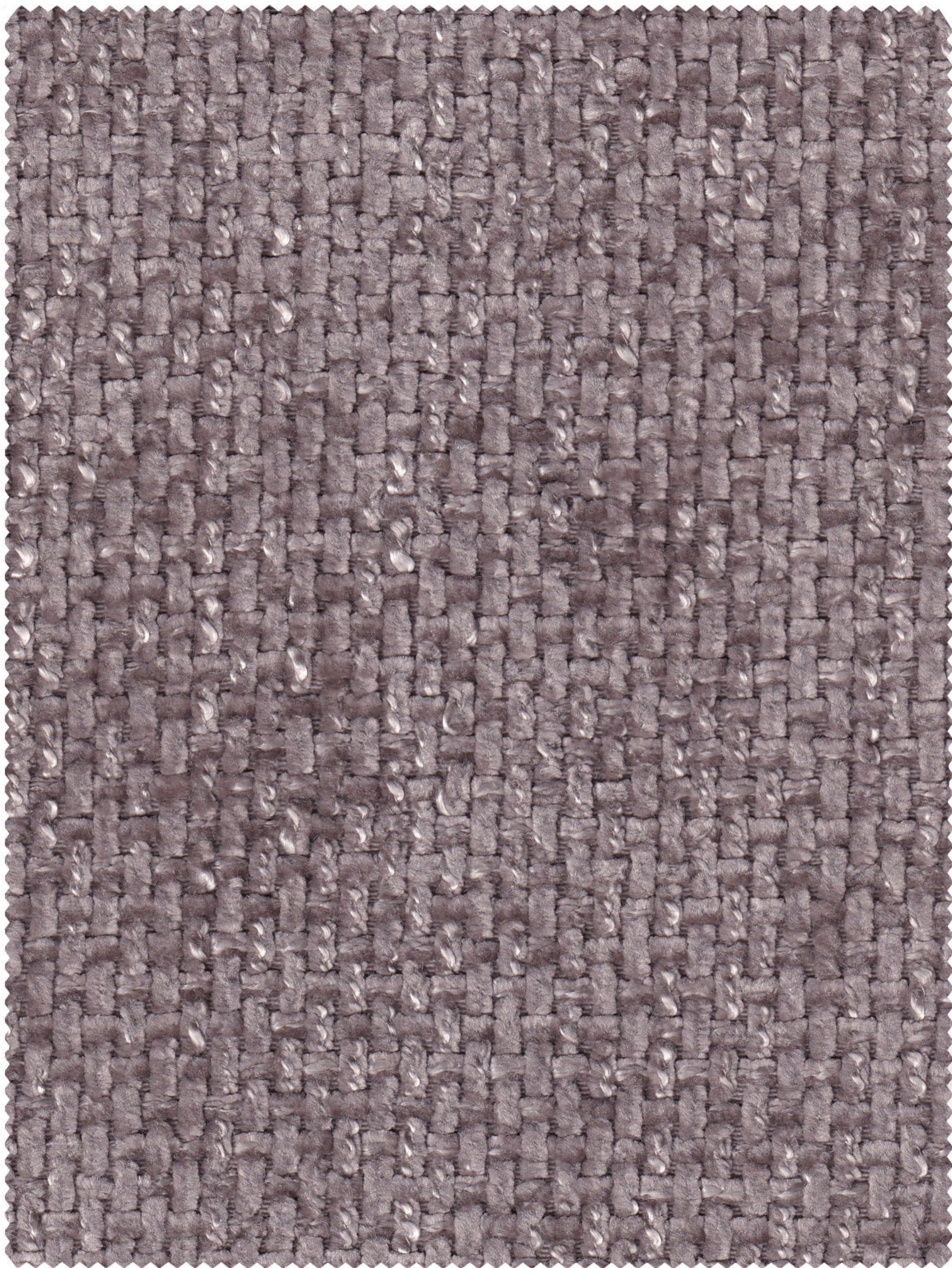
Martindale : 65,000 Rubs

Wash Care : 

Design : Lavaux

Colour : Coconut

Colour Shades may slightly vary from dye lot to dye lot.



## COARSE WEAVES

Sr.No. : 07



Width : 140 Cms

End use : 

Weight : 570 gms/mtr.

Composition : 95% Poly. & 5% Polymide

Martindale : 65,000 Rubs

Wash Care : 

Design : Lavaux

Colour : Rosato

Colour Shades may slightly vary from dye lot to dye lot.



COARSE WEAVES



## COARSE WEAVES

Sr.No. : 08



Width : 140 Cms

End use : 

Weight : 570 gms/mtr.

Composition : 95% Poly. & 5% Polymide

Martindale : 65,000 Rubs

Wash Care : 

Design : Lavaux

Colour : Oyester

Colour Shades may slightly vary from dye lot to dye lot.



## COARSE WEAVES

Sr.No. : 09



Width : 140 Cms

End use :  

Weight : 570 gms/mtr.

Composition : 95% Poly. & 5% Polymide

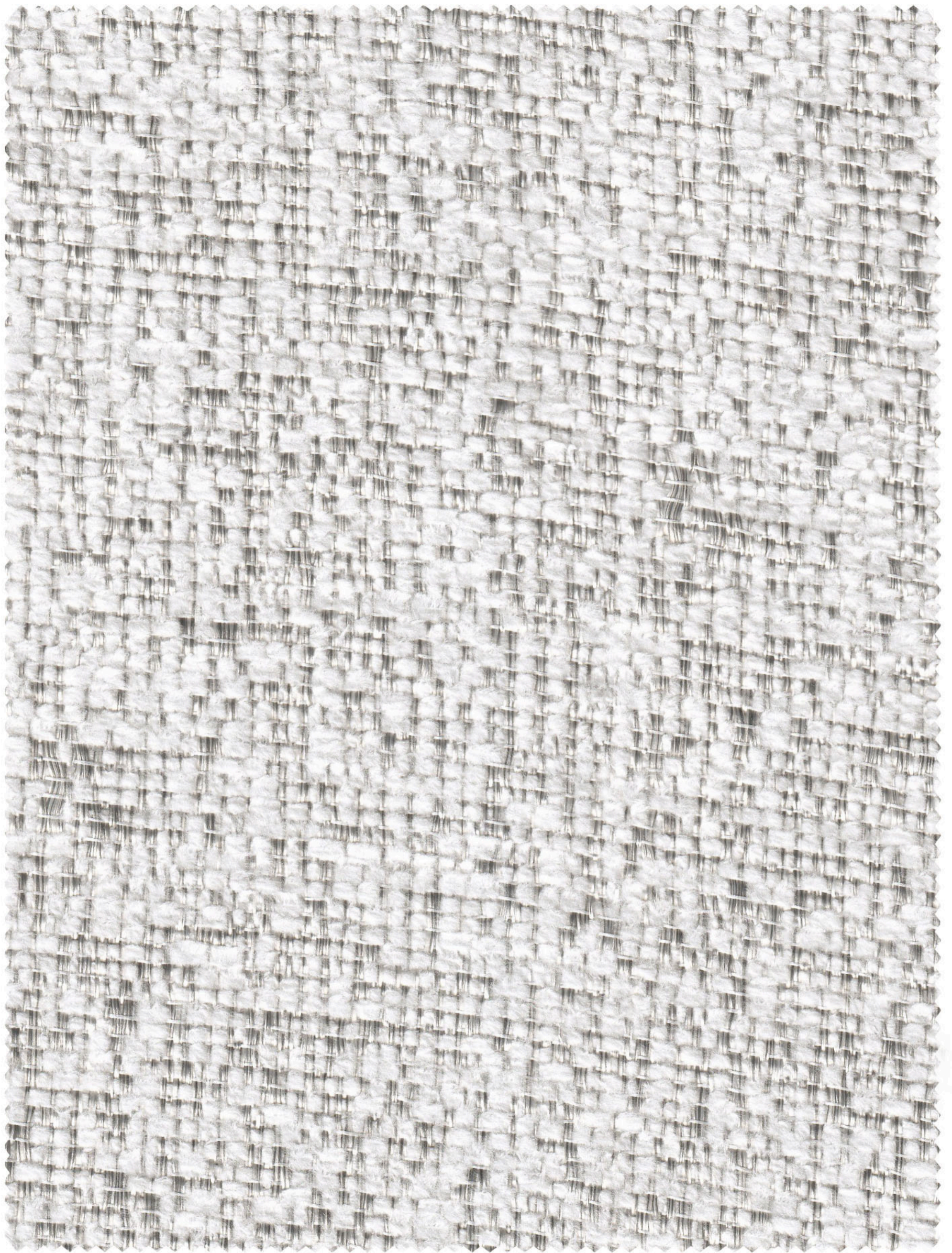
Martindale : 65,000 Rubs

Wash Care :     

Design : Lavaux

Colour : Pepper

Colour Shades may slightly vary from dye lot to dye lot.




## COARSE WEAVES

Sr.No. : 10



Width : 140 Cms  
End use :   
Weight : 570 gms/mtr.

Composition : 95% Poly. & 5% Polymide  
Martindale : 65,000 Rubs  
Wash Care : 

Design : Pierre  
Colour : Seashell

Colour Shades may slightly vary from dye lot to dye lot.



## COARSE WEAVES

Sr.No. : 11



Width : 140 Cms

End use : 

Weight : 570 gms/mtr.

Composition : 95% Poly. & 5% Polyamide

Martindale : 65,000 Rubs

Wash Care : 

Design : Pierre

Colour : Granola

Colour Shades may slightly vary from dye lot to dye lot.




## COARSE WEAVES

Sr.No. : 12



Width : 140 Cms  
End use :   
Weight : 570 gms/mtr.

Composition : 95% Poly. & 5% Polymide  
Martindale : 65,000 Rubs  
Wash Care : 

Design : Pierre  
Colour : Sesame

Colour Shades may slightly vary from dye lot to dye lot.



## COARSE WEAVES

Sr.No. : 13



Width : 140 Cms

End use : 

Weight : 570 gms/mtr.

Composition : 95% Poly. & 5% Polymide

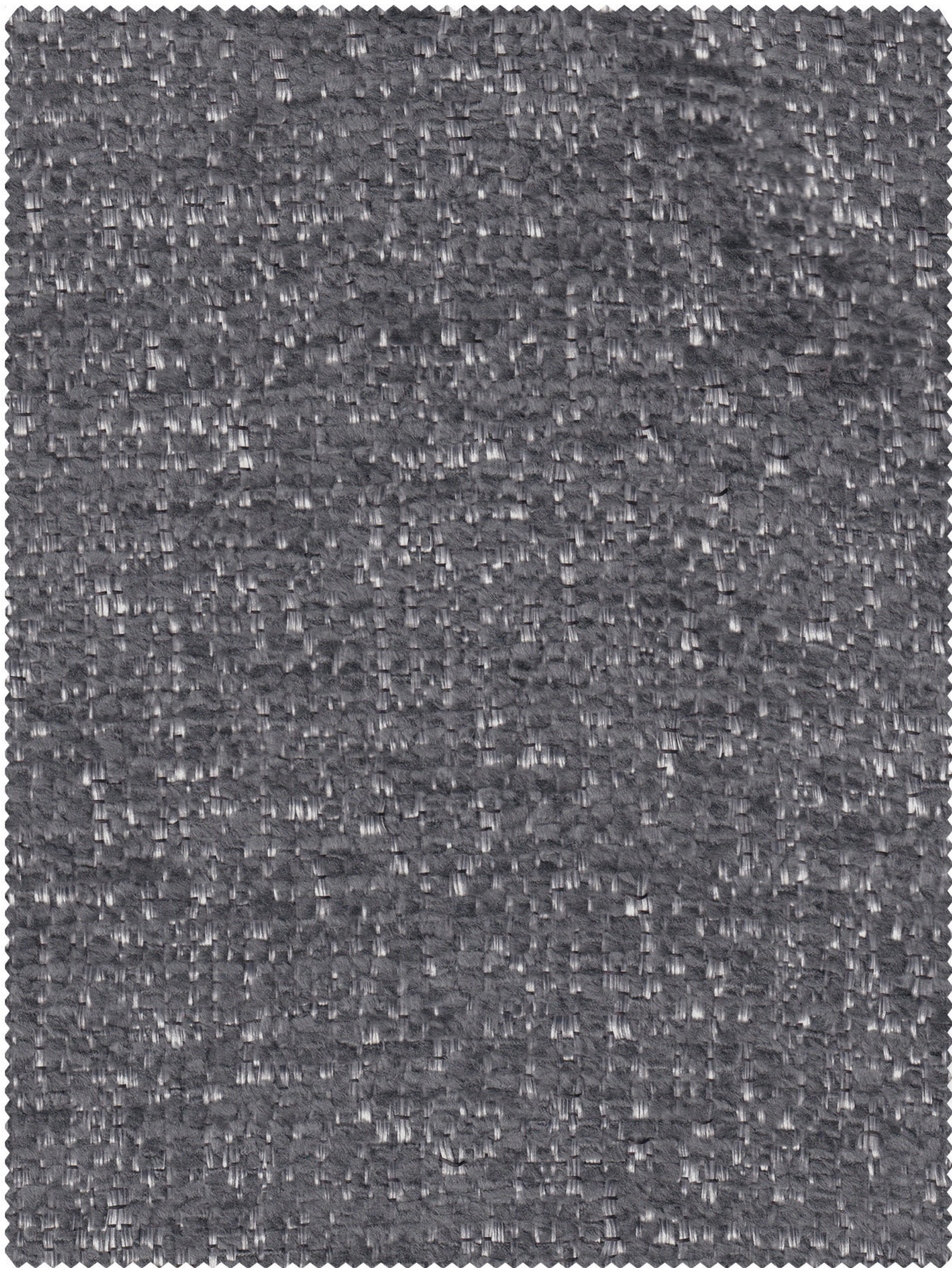
Martindale : 65,000 Rubs

Wash Care : 

Design : Pierre

Colour : Fig

Colour Shades may slightly vary from dye lot to dye lot.



## COARSE WEAVES

Sr.No. : 14



Width : 140 Cms

End use : 

Weight : 570 gms/mtr.

Composition : 95% Poly. & 5% Polymide

Martindale : 65,000 Rubs

Wash Care : 

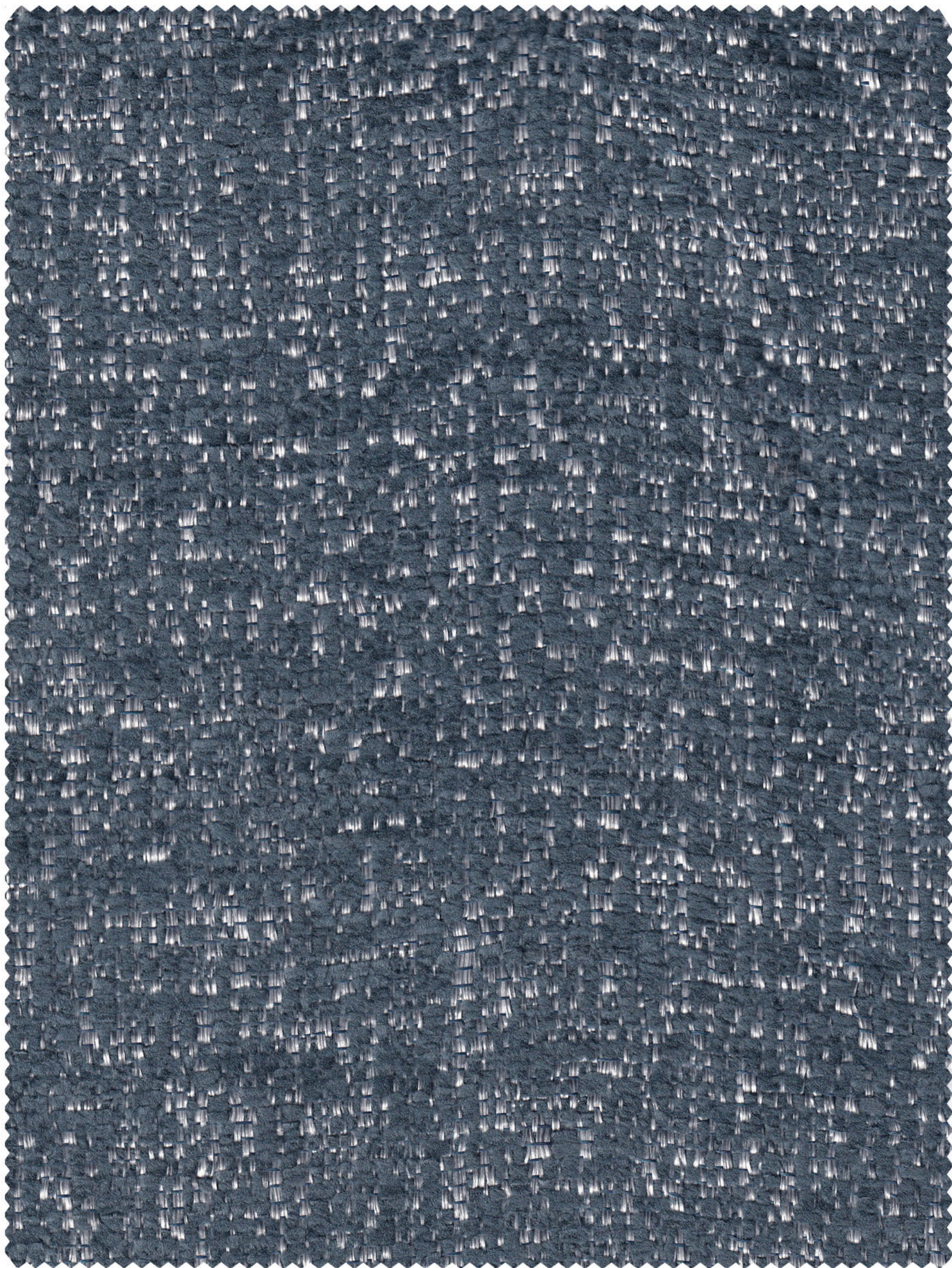
Design : Pierre

Colour : Baobad

Colour Shades may slightly vary from dye lot to dye lot.



COARSE  
WEAVES



## COARSE WEAVES

Sr.No. : 15



Width : 140 Cms

End use : 

Weight : 570 gms/mtr.

Composition : 95% Poly. & 5% Polymide

Martindale : 65,000 Rubs

Wash Care : 

Design : Pierre

Colour : Blueberry

Colour Shades may slightly vary from dye lot to dye lot.



## COARSE WEAVES

Sr.No. : 16



Width : 140 Cms

End use : 

Weight : 570 gms/mtr.

Composition : 95% Poly. & 5% Polymide

Martindale : 65,000 Rubs

Wash Care : 

Design : Champere

Colour : Salt

Colour Shades may slightly vary from dye lot to dye lot.



## COARSE WEAVES

Sr.No. : 17



Width : 140 Cms  
End use :   
Weight : 570 gms/mtr.

Composition : 95% Poly. & 5% Polymide  
Martindale : 65,000 Rubs  
Wash Care : 

Design : Champere  
Colour : Eggshell

Colour Shades may slightly vary from dye lot to dye lot.



## COARSE WEAVES

Sr.No. : 18

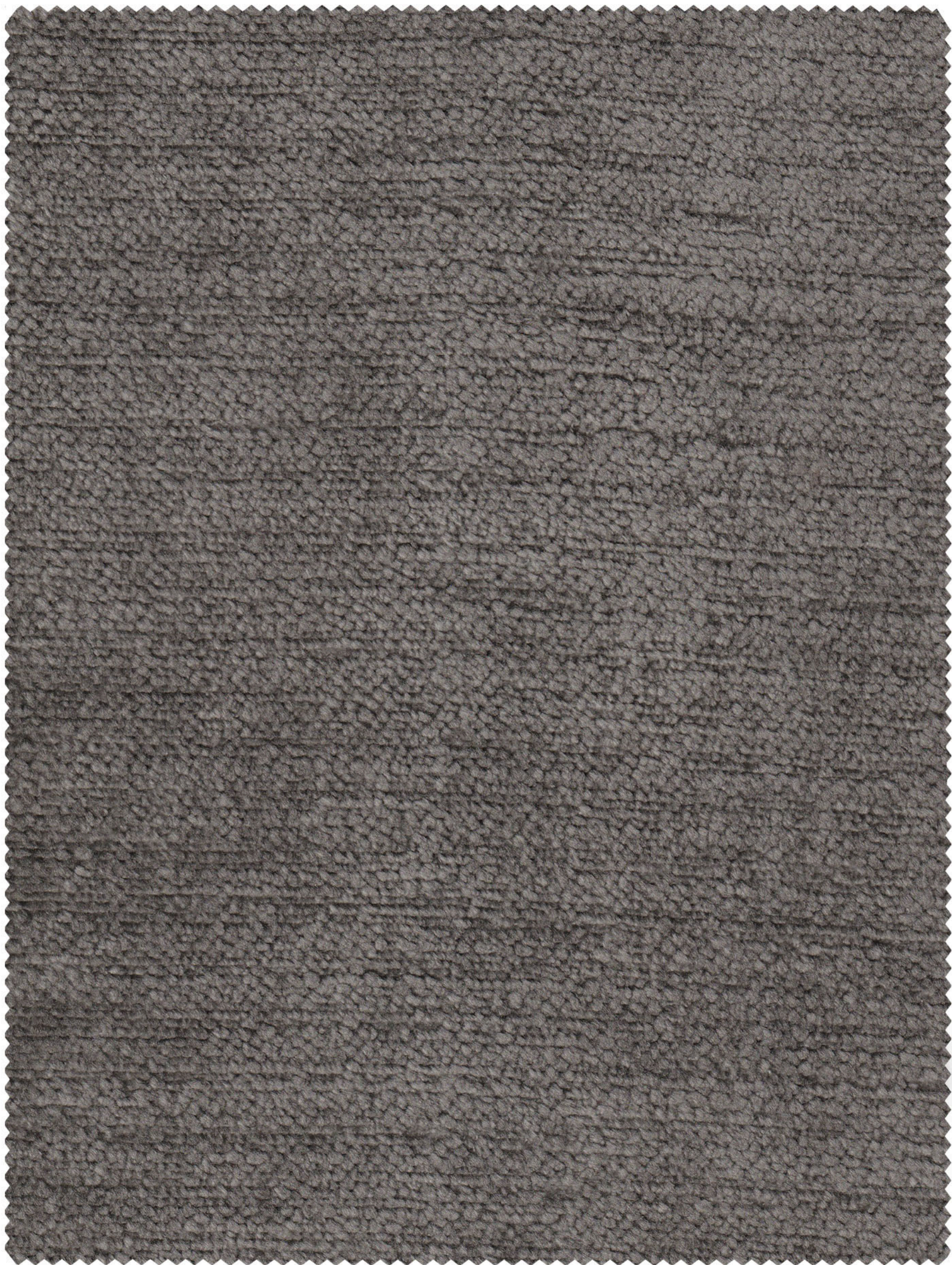


Width : 140 Cms  
End use :   
Weight : 570 gms/mtr.

Composition : 95% Poly. & 5% Polymide  
Martindale : 65,000 Rubs  
Wash Care : 

Design : Champere  
Colour : Oat

Colour Shades may slightly vary from dye lot to dye lot.



## COARSE WEAVES

Sr.No. : 19



Width : 140 Cms

End use : 

Weight : 570 gms/mtr.

Composition : 95% Poly. & 5% Polymide

Martindale : 65,000 Rubs

Wash Care : 

Design : Champere

Colour : Truffle

Colour Shades may slightly vary from dye lot to dye lot.



## COARSE WEAVES

Sr.No. : 20



Width : 140 Cms

End use : 

Weight : 570 gms/mtr.

Composition : 95% Poly. & 5% Polymide

Martindale : 65,000 Rubs

Wash Care : 


Design : Champere

Colour : Asparagus

Colour Shades may slightly vary from dye lot to dye lot.



# COARSE WEAVES

Quality	Width	Weight	Composition	Martindale	End Use
COARSE WEAVES	54"	570 Gms/Mtr	95% Poly 5% Polyamide	1,00,000 Rubs	

1. We do not accept responsibility for any damage resulting from inappropriate use, Chemical cleaning or additional impregnation.
2. Test results were gathered from various samples and therefore represent average indicative values.
3. Discolouration caused by clothing fabrics such as jeans does not represent a material defect. Minor colour deviations and discolouring in context of permissible industrial tolerance standards do not constitute reasons for claims.

Washing Instructions



Colour Shades may slightly vary from dye lot to dye lot.